

Solutions for Businesses



Tokyo Midtown, which had its grand opening in March 2007, is an exciting new development in Tokyo's trendy Roppongi district. Tokyo Midtown consists of six buildings, including the Midtown Tower, the central structure, which has five floors below ground and 54 above. Developed in line with the concept of "enriching urban lifestyles," this multipurpose complex features selected leading global fashion and interior decor shops, restaurants and other retailers, as well as an art museum, a hotel, offices, condominiums, a medical center and a park.

SECOM provides static guard services for Tokyo Midtown. The complex also uses the SECOM AED Package Service.

Photo courtesy of Tokyo Midtown Management Co., Ltd.

Drawing on its years of accumulated expertise and the trust of its subscribers, SECOM strives to offer new products and services that respond to the needs of customers and capitalize on its security services and operating strengths.

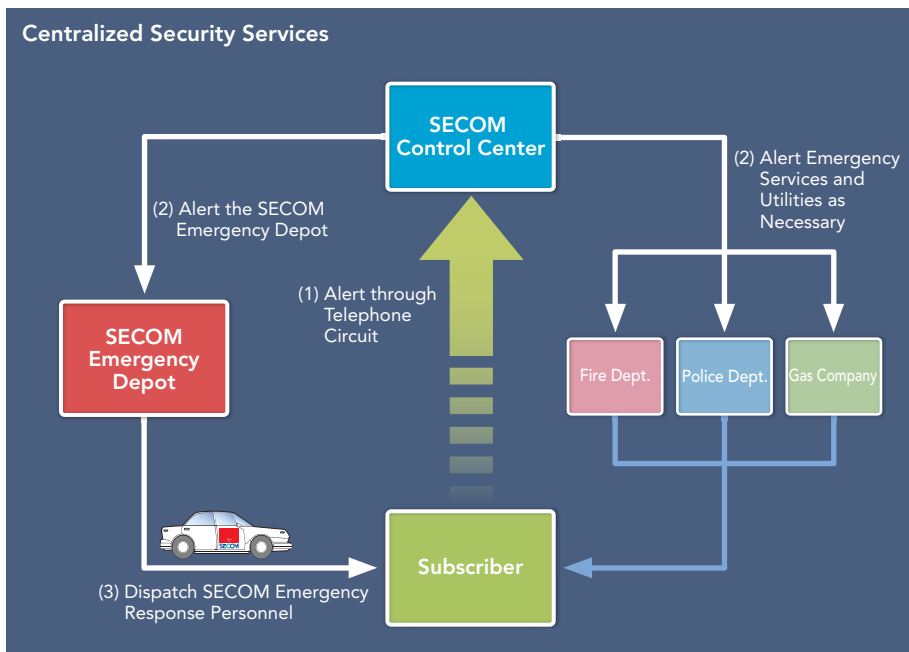
Responding to the Sophisticated Security Needs of Large Complexes

The recent wave of urban redevelopment and the trend toward large complexes are no longer limited to Tokyo, but have spread to other major urban areas, notably Osaka and Nagoya. The effective management of such complexes demands sophisticated, diversified security systems that protect people and property from crime and other dangers. In response to the needs of these large urban complexes, we drew on our extensive, accumulated experience and know-how and in November 2006 launched a new version of the TOTAX ZETA large-scale proprietary security system with improved functions and a lower price targeted at the general market.

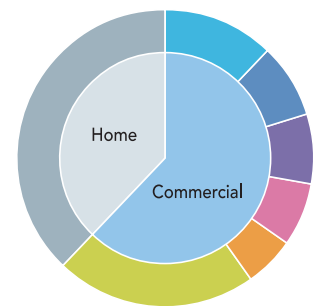
The most important feature of SECOM's sophisticated large-scale proprietary security systems is that they combine the most advanced security systems and manned services by trained professional guards in a single sophisticated

package. Another feature is that basic packages can be adapted to individual customer needs through the addition of various products and services. These are not limited to offerings that enhance security, but also include such options as the SECOM AED Package Service. This service provides emergency lifesaving kits featuring automated external defibrillators (AEDs)—electronic devices used to reestablish a normal heart rhythm following cardiac arrhythmia—to private- and public-sector office buildings, airports, commercial facilities, hotels and other large complexes. There have been numerous reports of AEDs having contributed to the saving of lives—SECOM's commitment thus extends beyond ensuring the security of such facilities to include the safety of people who use them.

We have also used our advanced technologies and expertise to develop SECOM Robot X, an outdoor surveillance robot equipped with cameras that give it a 360° view. This machine



Commercial and Home Security Service Subscribers by Subscriber Category (At March 31, 2007)



Service industries	12.1%
Retailing/wholesaling	8.1%
Financial services	7.6%
Manufacturing	6.9%
Government agencies	5.5%
Others	21.9%
Households	37.9%

Commercial Security Services

is particularly effective when utilized in large sites with multiple blind spots that make surveillance using conventional stationary cameras difficult.

Going forward, we will continue to capitalize on our exclusive expertise and comprehensive Group capabilities to respond to the increasingly diverse needs of customers in the market for large complexes.

Expanding Applications for On-line Security Systems

We offer a wide range of on-line security systems suited to a variety of structure sizes, applications and security needs. These include SECOM AX, a system that utilizes image recognition technology, enabling us to respond swiftly to any irregularity in the most appropriate manner. Prompted by recent crimes targeting offices and stores early in the morning and late at night when few people are present, we have augmented existing on-line systems with a new feature whereby we monitor windows and doors using sensors even when employees are present, thereby helping to prevent unlawful access and ensure employee safety.

SECOM IX was developed to prevent the rising incidence of robberies at retail facilities open round-the-clock. This system enables store employees to request assistance from a SECOM image monitoring center should they see anyone acting suspiciously or feel threatened by someone on the premises late at night. Employees need only push an emergency/request button to automatically transmit an image and voice in real-time for assessment by image monitoring center staff, who will, if necessary, broadcast a

voice warning on the premises or dispatch emergency response personnel. Although initially developed for use in occupied facilities, SECOM IX is also finding favor in apartment building entry halls. We have also sought to broaden applications for SECOM IX. Recently, we commenced sales of HANKS IX—a system designed to provide enhanced security for financial institutions during operating hours—that combines SECOM IX with the HANKS SYSTEM, an on-line security system for financial institutions.

Growing Demand for the Protection of Important Information

The enforcement of Japan's Personal Information Protection Law in 2005 has required the stringent management of personal information. Despite increased awareness of this problem, incidents involving personal information leaks have continued to occur. Consequently, an increasing number of companies are seeking security services around-the-clock—that is, during business hours when employees are present, as well as at night and other times when premises are empty. We have responded to these needs by developing SESAMO TRII, a comprehensive access-control system that can be administered from a single personal computer. This system can also be integrated with our various identification systems, including SECURILOCK II, an access-control system compatible with various contactless integrated circuit (IC) cards, and SESAMO IDj, which identifies individuals by the veins in their palms. Information collected can be tabulated according to area under management, time or



SECOM Robot X



SECOM Emergency response personnel



SESAMO IDj, an access-control system that identifies individuals by the veins in their hands

individual and can thus be used for a variety of administrative purposes. The function that monitors employee working hours is also used to manage employee health.

Moving ahead, we will continue taking steps to respond to the evolving needs of customers in the area of information security by offering effective on-line security, access-control and surveillance camera systems.

Launching the "Setagaya Security Patrol"

Following the opening of public services contracts to private-sector firms, in April 2007 we were contracted by Tokyo's Setagaya Ward to assist official efforts to reduce the incidence of crime in the area. In response, we introduced the Setagaya Security Patrol, which conducts round-the-clock street and park patrols using cars bearing the SECOM logo, thus acting as a public service for the 800,000 residents of Setagaya. This area is home to a high number of subscribers to SECOM Home Security and other SECOM security systems. The Setagaya Security Patrol is meaningful not only because it provides residents with security and peace of mind, but also because it enhances residents' awareness that SECOM is accessible and

convenient. This new approach, of a private-sector company providing services aimed at reducing crime throughout an entire district, has added a new dimension to the SECOM service lineup.

Mine Rehabilitation Program Center: Japan's first PFI Correctional Facility

In line with our mission to contribute to society through our business activities, we continue to venture into challenging new areas. One example is the Mine Rehabilitation Program Center, a private finance initiative (PFI) correctional facility in the city of Mine, Yamaguchi Prefecture, which opened in April 2007. A SECOM-led consortium secured an 18-year contract to construct, maintain and operate the facility in cooperation with the Ministry of Justice, in general bidding. For this purpose, the consortium established a special firm, Social Rehabilitation Support Mine Co., Ltd., of which SECOM is the principal shareholder. The Mine center has many unique features, including its name, which identifies it as a "facility for rehabilitation," rather than a "prison."

Another unique feature of the Mine center is that it capitalizes on private-sector expertise through joint operation by private-sector



SECOM Control Center

Commercial Security Services

Mine Rehabilitation Program Center, Yamaguchi Prefecture



Front entrance to the Mine Rehabilitation Program Center (above); cell block patrol by SECOM static security guards

participants and the government. Shifting the bulk of responsibility for facility operations to the private sector enables corrections officers to focus on their primary responsibility of providing correctional education. We will endeavor to support the efforts of corrections officers by using advanced security systems to ensure the capable, efficient management of security.

The facility is also unique in its emphasis on rehabilitation programs for convicted offenders. In addition to offering vocational training, including education in the area of information technology (IT), the facility has attempted to create a living environment for inmates that is similar to ordinary society by modifying inmate uniforms and living quarters. Cells are built on a semi-open plan and inmates are able to move freely about the corridors, multipurpose hall and other common areas of the cell block except during certain hours. With the aim of fostering self-discipline, inmates are allowed to walk within the facility unaccompanied. To help inmates maintain relations with their families, a

process deemed essential to rehabilitation, visits take place in rooms without barriers.

Another SECOM-led consortium has recently secured a contract to maintain and operate two PFI correctional facilities located in the city of Sakura, Tochigi Prefecture: Kitsuregawa Rehabilitation Program Center and the adjacent Kurobane Prison. We will assume responsibility for the maintenance and operation of both facilities from October 2007. These projects will enable us to secure expertise in correctional facility management, as well as to contribute to a society that is secure and free from apprehension by promoting and assisting the prompt rehabilitation of inmates.



CCTV system installed in the center



Round-the-clock monitoring from the central security office



IT training session for inmates

SECOM Employee Training

We place our highest priority on earning the trust of our customers, and we recognize that this necessitates excellent, high-quality service and an effective grasp of our customers' perspectives. We have established four SECOM HD Center training facilities in Japan. These facilities offer training programs based on a human resources development curriculum created in-house to cultivate capable, skilled employees. In addition to imparting the expertise and technological skills essential for security services professionals, the program focuses on educating employees on the importance of acting in accordance with the SECOM Group Code of Employee Conduct and striving to do what is appropriate to ensure a high level of corporate ethics.

By ensuring all SECOM employees approach their work with a commitment to ethical practices, we are confident in our ability to deliver outstanding services and contribute to society. The solid reputation of the SECOM brand is a reflection of our thorough and consistent employee training.



Training in security equipment operation



Studying SECOM's corporate philosophy

Home Security Services

Peace of Mind for the Home



Japan's leading home security system, **SECOM Home Security**, encompasses high-quality security and a wide range of value-added services. **SECOM** offers tailored proposals incorporating a variety of products and services, thereby helping to bring security and peace of mind not only to homes, but also to towns and neighborhoods.

SECOM Home Security: Responding to diverse home security needs and expanding subscriptions

A pioneer in the provision of home security services in Japan, SECOM has ensured the security of its subscribers' residences since launching SECOM Home Security in 1981 and continues to lead the market. SECOM Home Security is an on-line security system valued by customers for offering round-the-clock monitoring of homes for intruders, emergency reports, fires, gas leaks and medical emergencies.

Our SECOM Home Security customer base has expanded over recent years, and today ranges from single people living on their own to people with families and seniors. At the same time, we have introduced a wide range of additional services designed to add value. These include SECOM Medical Club, a membership-based health management service that gives SECOM Home Security subscribers access to telephone health counseling and Internet-based health management services around-the-clock, thereby helping to relieve health concerns.

We also offer SECOM Home Service, a suite of lifestyle support services through which we assist customers with problems arising in daily life, including plumbing issues and lost keys, and patrol the area around their homes. Owing to the favorable reputation this service has

earned from subscribers, we are expanding our marketing focus to encompass other large cities throughout Japan, ensuring customers are satisfied they turned to SECOM.

The rising incidence of residential break-ins occurring when the occupants are at home has clearly increased the danger of physical harm. We have enhanced the capabilities of SECOM Home Security to ensure the security of home both when the occupants are in and when they are out. We also market an extensive selection of products designed to enhance security. These include SECOM *Anshin* Glass, a high-impact, breakage-resistant glass window with a built-in sensor, and SECOM *Anshin* Film, a window glass film that improves breakage-resistance. We also offer an extensive selection of products that incorporate image recognition technology, including SECURIFACE, an intercom system featuring a built-in face detection function that recognizes when the person at the door is hiding his or her face, and the Sensor Light Camera, a camera that detects when a person approaches the house at night and automatically turns on a light and takes a photograph.

With home security increasingly being seen as a standard feature in many homes, we continue to reinforce our competitive advantage in the growing home security market by providing value-added services. We are also



SECOM Home Security



SECOM Home Service



SECOM Shop outlet

Home Security Services

expanding our network of SECOM Shop sales outlets throughout Japan, focusing primarily on large cities.

Responding to Rising Needs for Town Security

In response to the increasingly brutal nature of crimes, we are promoting the concept of “town security,” that is, security systems designed to protect entire communities. Town security systems involve creating high-grade, tailored packages that combine on-line security systems in all houses in a community with a variety of security products. As an example, a person entering a community with a SECOM Town Security system must first contact the house he or she is visiting using a SECOM MS-3 system intercom so that the occupants can open the remote-controlled gate. At the entrance to the house, the visitor uses the SECURIFACE residential intercom system to gain entrance. In contrast, occupants open the gate with their own SECURILOCK II contactless IC cards and enter their own homes using SESAMO Home IDs,

an access-control system employing fingerprint identification installed at the entrance. Houses in such communities have SECOM Home Security systems installed, SECOM *Anshin* Glass high-impact, breakage-resistant window glass in all first-floor windows—each of which has a built-in sensor—and Sensor Light Cameras installed outside, which records images of visitors when occupants are out.

In the future, we will continue to develop systems that combine our comprehensive selection of products and services to contribute to communities that are secure and free from apprehension.

Main gate of a community with a SECOM Town Security system



Other Security Services

In response to rising needs for mobile security, SECOM is expanding applications for COCO-SECOM systems, as well as broadening the system's capabilities by combining it with other SECOM services.

Rising Demand for COCO-SECOM

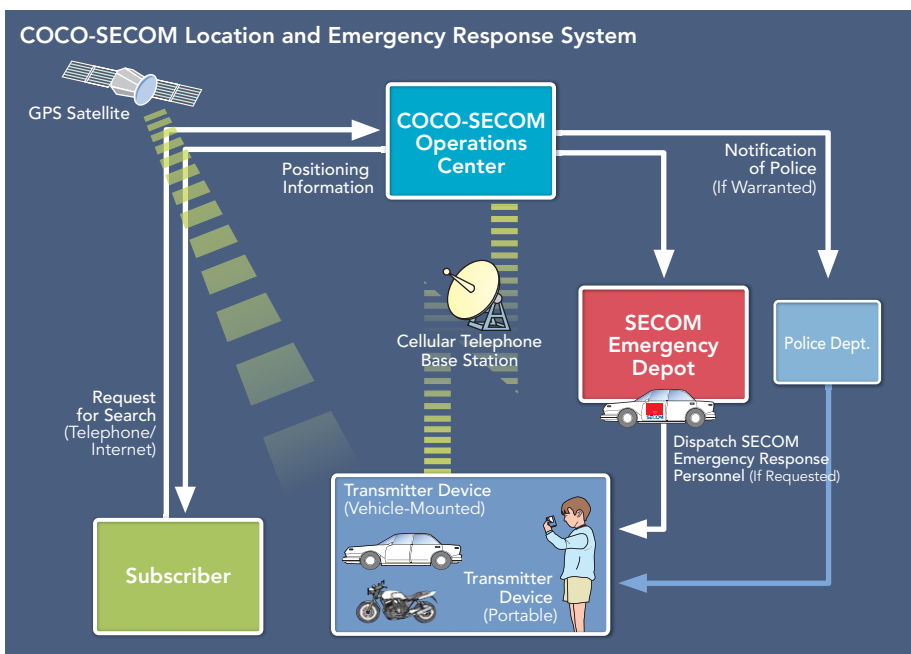
We launched COCO-SECOM mobile security systems in 2001 with the aim of cultivating new demand. Since then, COCO-SECOM has played a key role in the prompt and safe resolution of several incidents—including the recovery of stolen vehicles and the rescue of elderly individuals who had wandered away and become lost—and the effective prevention of other incidents. COCO-SECOM uses signals from Global Positioning System (GPS) satellites and cellular telephone base stations to pinpoint locations with an accuracy of within five to 10 meters under optimum circumstances. Another key feature of COCO-SECOM is that it will dispatch emergency response personnel around-the-clock if a subscriber requests assistance. Today, COCO-SECOM services are available for locating people, vehicles, objects and pets.

In March 2007, we began offering the COCO-SECOM School Commute Management System. This system can confirm the whereabouts

of a student on the way to or from school, as well as ascertain when the student arrives at or departs from school and whether he or she is at school. The system uses IC tag readers positioned at a school's gates that pick up signals from IC tags in COCO-SECOM transmitter devices and transmits information when the child has arrived at or left school via e-mail to, for example, a cellular phone. During the child's school commute, COCO-SECOM provides real-time information on the child's whereabouts. If a child senses danger, he or she can alert SECOM simply by pressing an emergency button on the COCO-SECOM transmitter device and, if necessary, request the dispatch of emergency response personnel. Placement of IC tag readers at close intervals throughout schools also enables the schools to precisely monitor where students are at any given time. With the aim of protecting children from crimes, we will continue actively promoting this system to schools, cram schools and other educational facilities throughout Japan.



COCO-SECOM Operations Center



COCO-SECOM



COCO-SECOM School Commute Management System, which combines IC tags and COCO-SECOM transmitters

Security Services in Overseas Markets

SECOM's expanding overseas presence enables it to provide the same high-grade security services as it does in Japan to customers in overseas markets. In particular, SECOM is working to enhance growth in Asia, where security systems are coming into increasingly wide use.

Expanding Overseas Operations by Entering the Vietnamese Market

In June 2006, we established a joint venture with a local firm and began offering security consulting services in Vietnam. With this addition, our overseas operations currently encompass businesses in Taiwan, the Republic of Korea (ROK), the United States, the United Kingdom, Thailand, Malaysia, Singapore, Australia, the PRC, Indonesia and Vietnam. Our decision to begin offering services in Vietnam reflected the growth potential of this market as increasing number of Japanese and other foreign companies establish operations there. At present, the Vietnamese security market centers on static guard services. Our plan is to expand our business in Vietnam by focusing primarily on on-line security systems.

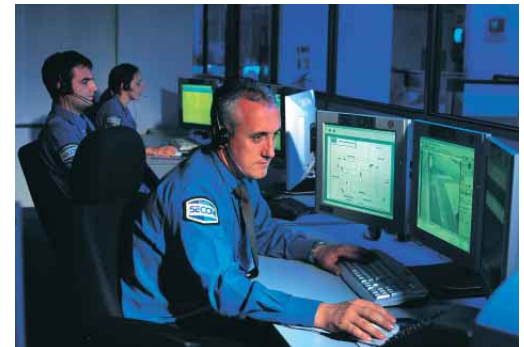
Security Systems Begin to Find Wide Acceptance in the PRC

Our operations in the PRC began in 1992 with the establishment of holding company SECOM (China) Co., Ltd. Since then, we have set up security services companies in key cities in the country's high-growth coastal areas—namely Dalian, Shanghai, Beijing, Qingdao and Shenzhen. Through these companies, we offer security services on a par with those we provide in Japan, encompassing not only remote surveillance, but also emergency response services, an approach that continues to attract an increasing number of subscribers. With the aim of expanding the aforementioned five companies' operations, we are currently setting up branches and offices in surrounding cities to expand the companies' business. Going forward, we plan to expand the service area covered by the companies to approximately 20 cities, from the current 13, with a view to taking our next step in the PRC, which will be to set up operations in key inland cities.

These and other efforts will position us to capitalize on the increasingly wide acceptance of security systems in the PRC by offering distinctive SECOM products and services. By doing so, we aim to further grow our business in this key market.



Beijing Jingdun Secom Electronic Security Co., Ltd.



Secom Plc Control Center, UK

Fire Protection Services

SECOM and Nohmi Bosai are integrating their extensive management resources and expertise to provide effective fire protection services. Sales of residential fire alarm systems continue to increase.



Fire extinguishing system installed to protect a cultural property

New Law Drives Up Demand for Residential Fire Alarm Systems

A recent change in Japan's Fire Protection Law made the installation of fire alarm systems in new homes mandatory nationwide on June 1, 2006. In the future, existing homes will also be required to have fire alarm systems installed that comply with rules set by local authorities. In response, SECOM commenced sales of the New Home Fire Sensor, a fire alarm system for residential applications. This system is manufactured by Nohmi Bosai, the leading company in this industry, which became a consolidated subsidiary of SECOM in December 2006.

Developed for use in detached houses and apartment buildings, the New Home Fire Sensor detects smoke and heat when fire starts and alerts occupants by sounding an alarm and flashing a light. The unit is battery-powered, meaning its performance is unaffected by power failures, and freestanding, which eliminates time-consuming wiring and facilitates easy installation. Moreover, a battery life of 10 years, a 10-year warranty effective from the date of

receipt and round-the-clock SECOM support in the event of a breakdown ensure prompt and effective after-sales service. Owing to such features, the New Home Fire Sensor has attracted praise from developers and others in the housing construction industry, and we plan to continue expanding sales.

To date, Nohmi Bosai has contributed to the creation of a more secure society through the provision of automatic fire alarm, fire extinguishing and other fire protection systems. The company provides systems for office buildings, plants, tunnels, cultural properties, ships, residences and other facilities. In the future, we will endeavor to respond to diverse and sophisticated fire protection needs and to cultivate new markets by developing innovative products that integrate our security technologies with Nohmi's fire protection technologies.



Nohmi Bosai's Menuma Factory



Foam fire extinguishing system

Medical Services

SECOM's medical services contribute to security and peace of mind by helping to relieve health concerns. By expanding its medical services businesses, which include home medical services and the management of nursing homes, SECOM will continue to chart further growth.

Raising the Standard of Home Nursing Services

Our medical services business reflects our conviction that protecting the health of customers is crucial to security and peace of mind. We launched our medical services business in 1991, beginning with the provision of Japan's first home nursing services, whereby nurses regularly visit patients in their homes and provide nursing services, including observing patients' conditions and providing treatment in line with the instructions of each patient's physician.

We have expanded our network of SECOM visiting nurse stations, which dispatch nurses to patients' homes and are on call around-the-clock, to 42. These nurses are highly skilled and experienced. We have also built a new training center for visiting nurses, with the aim of further raising the standard of our services. Going forward, we will continue striving to provide home nursing services that not only earn the trust of customers, but also surpass their expectations.

Managing Specialized Nursing Homes

In October 2006, we opened Comfort Garden Azamino, the first facility in our SECOMFORT series of nursing homes, in Yokohama. Comfort Garden Azamino brings together our expertise in such areas as security, medical care and personal care. We have earned a solid reputation in this field as an operator of nursing homes that also provide personal care services, including Sacrava Seijo, Royal Life Tama, as well as the Alive Care Home series. Comfort Garden Azamino draws on our specialized knowledge in the management of nursing homes with consideration for the advancing needs of senior citizens in the years ahead.

Based on the concept of "comfortable aging," Comfort Garden Azamino is designed to provide peace of mind by enabling residents

to remain in the same place for the remainder of their lives with on-site health care and a wide range of attentive care services provided by expert staff. The second SECOMFORT nursing home, Comfort Hills Rokko, is scheduled to open in April 2009 in Kobe.



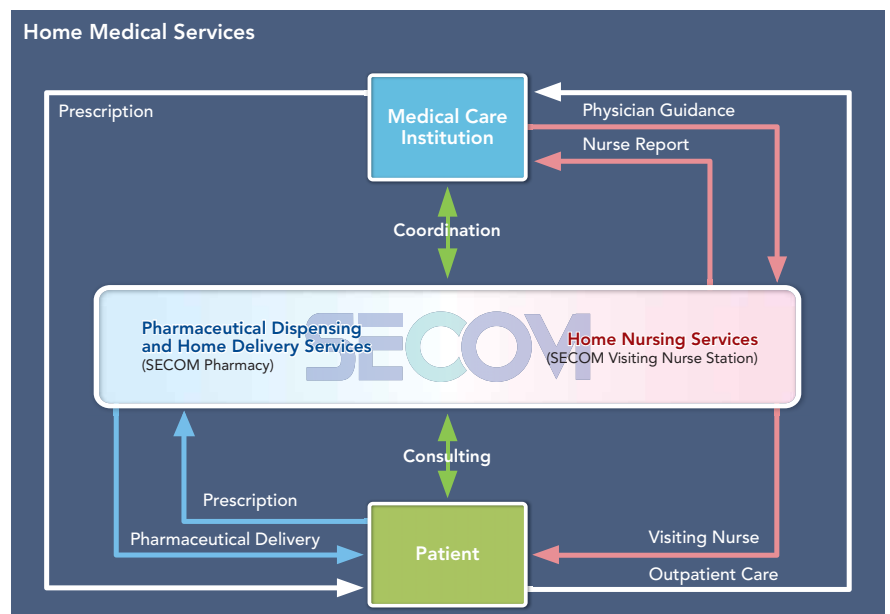
Visiting nurse training



Comfort Garden Azamino



Room in Comfort Garden Azamino



Insurance Services

SECOM's non-life insurance policies ensure peace of mind in the event of misfortune. SECOM continues to develop original insurance offerings and expand insurance services sales.



New SECOM *Anshin My Car* on-site emergency services

Distinctive Non-Life Insurance Policies

SECOM's move into the non-life insurance business reflects a conviction that combining security services, which provide prior protection, and insurance, which looks after customers in the event of misfortune, reinforces security and peace of mind. Accordingly, our non-life insurance subsidiary offers a variety of distinctive policies

One of these is SECOM *Anshin My Home*, a popular policy designed for households that takes into account the reduced risk of fire and robbery in homes that have installed home security systems and consequently offers a discount on premiums of up to 60%. The same concept underlies the Security Discount Fire Policy, which offers a discount on premiums of up to 30% to commercial customers that have installed security systems, recognizing this as a risk-mitigating factor. New SECOM *Anshin My Car* is a comprehensive automobile insurance policy that offers round-the-clock support services from SECOM emergency response personnel in the event of an accident.

We also offer MEDCOM, an unrestricted cancer treatment policy that covers the cost of all treatments, including the cost of treatments not covered by Japan's national health insurance scheme, which is normally borne by the patients. This enables subscribers to take advantage of advanced treatment options without worrying about the frequently prohibitive costs. MEDCOM also offers access to MEDCOM Nurse Call, a service whereby staff with nursing qualifications provides consultation and introduces medical institutions. This enables subscribers to obtain second opinions from experts aside from their own attending physician. In August 2006, we introduced MEDCOM One, a policy that is also available to women who have previously had breast cancer. Many standard cancer insurance policies do not cover individuals who have previously had cancer. MEDCOM One is an unrestricted policy that is available to women who have had breast cancer if they meet all of the policy's other requirements.

Going forward, we will continue to work to expand sales in the insurance services business by developing attractive new insurance offerings.



Non-life insurance call center



MEDCOM nurse call center

Geographic Information Services

Pasco is expanding its GIS, surveying and measuring services and operations with the aim of becoming the world's leading name in geospatial information. The successful launch of a new commercial satellite has also made it possible for Pasco to offer satellite information-based geographic information services.

Pasco Introduces New Geographic Information Services

On June 15, 2007, a new German commercial satellite boasting the highest resolution of any existing commercial satellite was successfully launched into orbit. This satellite uses microwaves to capture images of the earth's surface, meaning it can not only capture images regardless of the weather or the time of day, but also achieve a maximum one meter-class resolution in doing so. With this satellite, it is possible to obtain 1:25,000-scale geographical data for all of Japan in only one and a half months—something that would take 10 years with an aircraft and 4.5 years with a conventional optical satellite. We expect this capability to facilitate the prompt updating of map data and the swift provision of information on topographic changes resulting from earthquakes, tsunamis, typhoons, volcanic eruptions and other natural disasters.

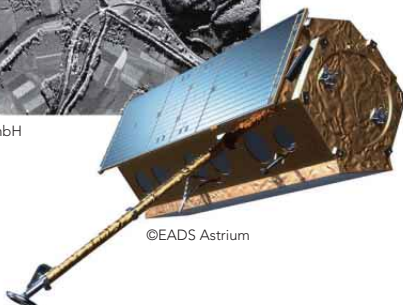
Pasco has obtained exclusive rights in Japan and nonexclusive rights worldwide to sell image data offered by the satellite's operator, enabling the company to begin offering satellite-based geographic information services. In the years ahead, Pasco will focus its efforts on integrating its accumulated surveying and measuring technologies, GIS capabilities and newly acquired access to high-resolution satellite image data to develop new geographic information services.

A Broad Range of Geospatial Information Services

Pasco offers a wide range of geospatial information services, including the creation of three-dimensional maps for automobile navigation systems that incorporate a wide range of information, including the number of national motorways and the number of lanes on the motorways, as well as the location of filling stations. For the public sector, Pasco provides consulting services designed to support urban planning and road engineering. For the private sector, Pasco provides marketing support services, designed to help companies formulate branch opening plans; logistics support services, which aid efforts to develop appropriate plans for the use of trucks and other forms of transport; and disaster response services, which include a service that assesses the risk of building collapse and a service that helps determine the safest routes between employees' homes and workplaces in the event of a disaster. Pasco will continue to expand its lineup of geospatial information services with the aim of establishing itself as a global leader in this field.

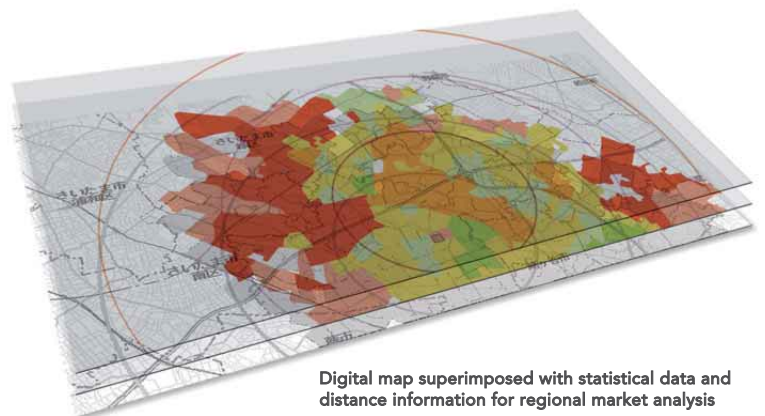


©Infoterra GmbH



©EADS Astrium

Terra SAR-X commercial satellite and simulated image



Digital map superimposed with statistical data and distance information for regional market analysis

Information and Communication Related and Other Services

SECOM endeavors to provide security and peace of mind with a wide range of information and communication related services for today's networked society. SECOM's other services include the development and sales of condominiums developed in line with a concept that emphasizes peace of mind and quality lifestyles.

Providing Disaster Response Support Services that Assist Corporate Risk Management Efforts

We provide a variety of services designed to assist industrial and commercial subscribers to reopen for business as soon as possible after a major disaster. These include the SECOM Safety Confirmation Service, which helps companies confirm the safety of employees and their families, as well as to collect and share prompt and accurate information on, for example, damage to buildings, in the event of a natural disaster, such as an earthquake or a typhoon, or a man-made disaster, such as a terrorist attack, thereby assisting them to swiftly resume operations. We also offer the SECOM Disaster Response Support Service, which is designed to assist companies in developing effective initial response strategies, thereby preparing them to act swiftly in the aftermath of disasters. The SECOM Electronic Data Storage Service enables companies to back up and store important data in a safe location provided by SECOM. The swift resumption of operations after a disaster and the formulation of a BCP to make this possible are crucial aspects of risk management for companies today. We are currently taking steps to improve our disaster response support services and enhance our ability to assist customers in the formulation of effective BCPs.



SECOM Safety Confirmation Service

Support for Sophisticated Cyber Security: The Secure Data Center

The Secure Data Center provides a highly secure environment for our subscribers' servers that combines physical and cyber security. Physical security services include round-the-clock static guards, access-control systems and surveillance camera systems, while cyber security services focus on the protection of subscribers' valuable electronic data against Internet-based intrusion and computer viruses, and the provision of digital authentication services. Secure Data Center subscriptions continue to rise, underscoring the praise it has attracted from prominent financial institutions and other subscribers. Going forward, we will continue to advance our cyber security offerings.



Secure Data Center

Condominiums with Contingency Planning Features

In line with the concept of emphasizing peace of mind and quality lifestyles, we have developed the Glorio series of condominiums, which offer advanced security and benefit from our comprehensive capabilities. All units are equipped with our on-line security systems as a standard feature. The Glorio series also offers Glorio Support 24 condominium management services that enable residents to call a round-the-clock customer center for assistance with dwelling-related problems, as well as questions related to non-life insurance and medical and personal care. We also sell condominiums with contingency planning features, including earthquake-proof structural designs, as well as a variety of emergency back-up features—including hot water tanks that can be used to supply emergency drinking water and emergency toilets that use manholes—that help protect occupants in the event of a major disaster. We will continue to maximize our comprehensive capabilities in security and fire protection, among others, to develop condominiums that earn the satisfaction of our customers.



Glorio Tower Sugamo (Tokyo)