

2040 VISION

SECOM GROUP

MISSION

In accordance with its mission of helping achieve a society free from concerns by creating innovative services that benefit society as a whole, SECOM Group has sought, since its founding in 1962, to provide reliable peace of mind.

Riding the tide of social change, SECOM continues to evolve, refusing to be constrained by preconceived notions, in keeping with its commitment to doing what is appropriate.* This commitment is an essential element of SECOM Group's DNA.

* Appropriate is used here to mean just, fair and beneficial, not only to SECOM but to society as a whole.



STRENGTHS

Competitive Advantage

SECOM's core competitive advantage is a business model that fuses people and technologies, that is, combines high-level operations conducted by professionals with expertise in diverse fields and advanced technological prowess made possible by a unique R&D framework and open innovation.



Through innovation, SECOM has continued to develop a broad range of new services.



The SECOM Group's Vision for 2040

SECOM's Outlook for 2040

2040 VISION

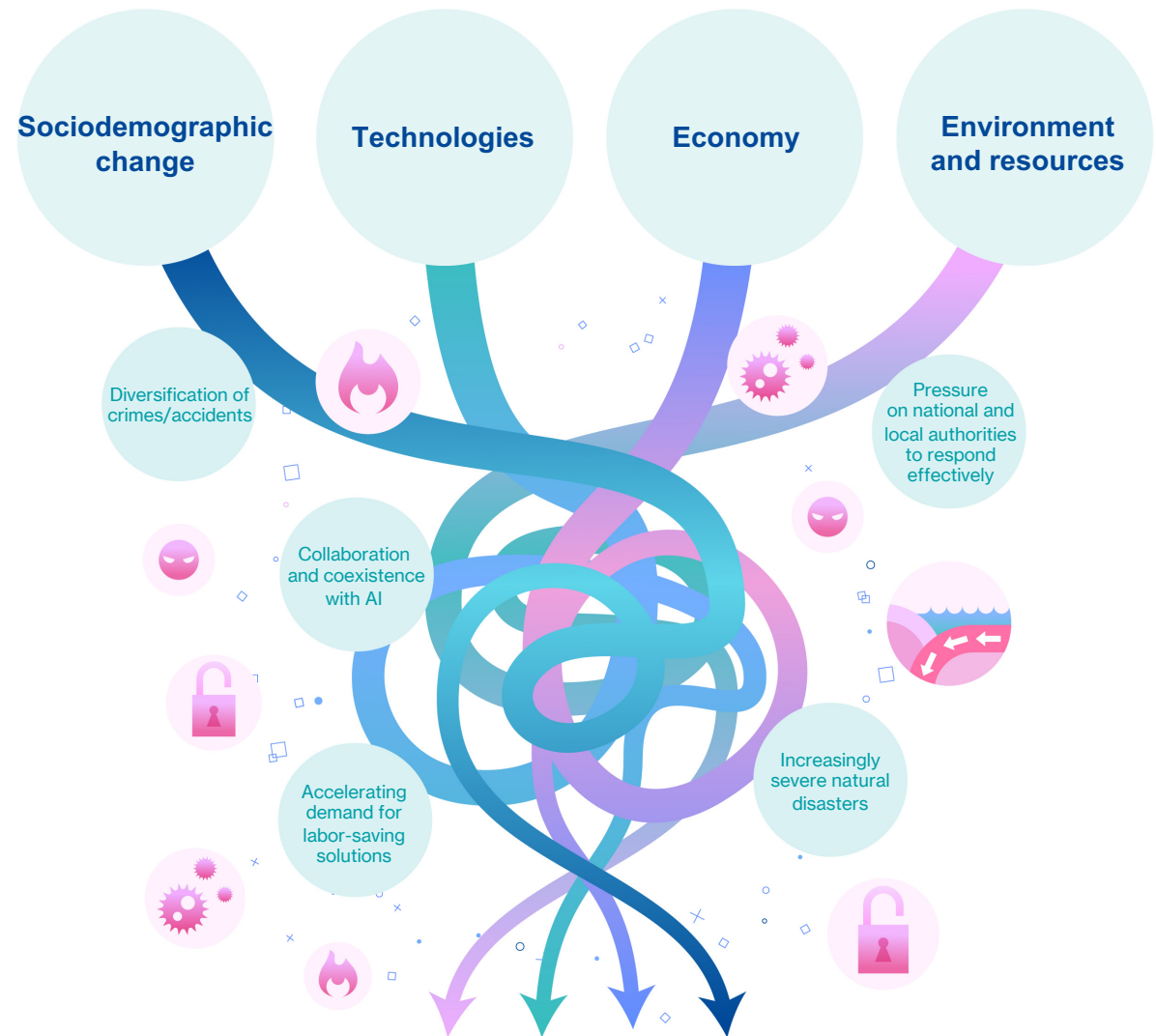
**Capitalizing on the ANSHIN Platform,
SECOM will work to extend proactive services that
deliver “Peace of Mind through Anticipation.”**

SECOM will continue to evolve, in line with its goal of providing enduring peace of mind to an ever-changing society.



SOCIAL CHANGE

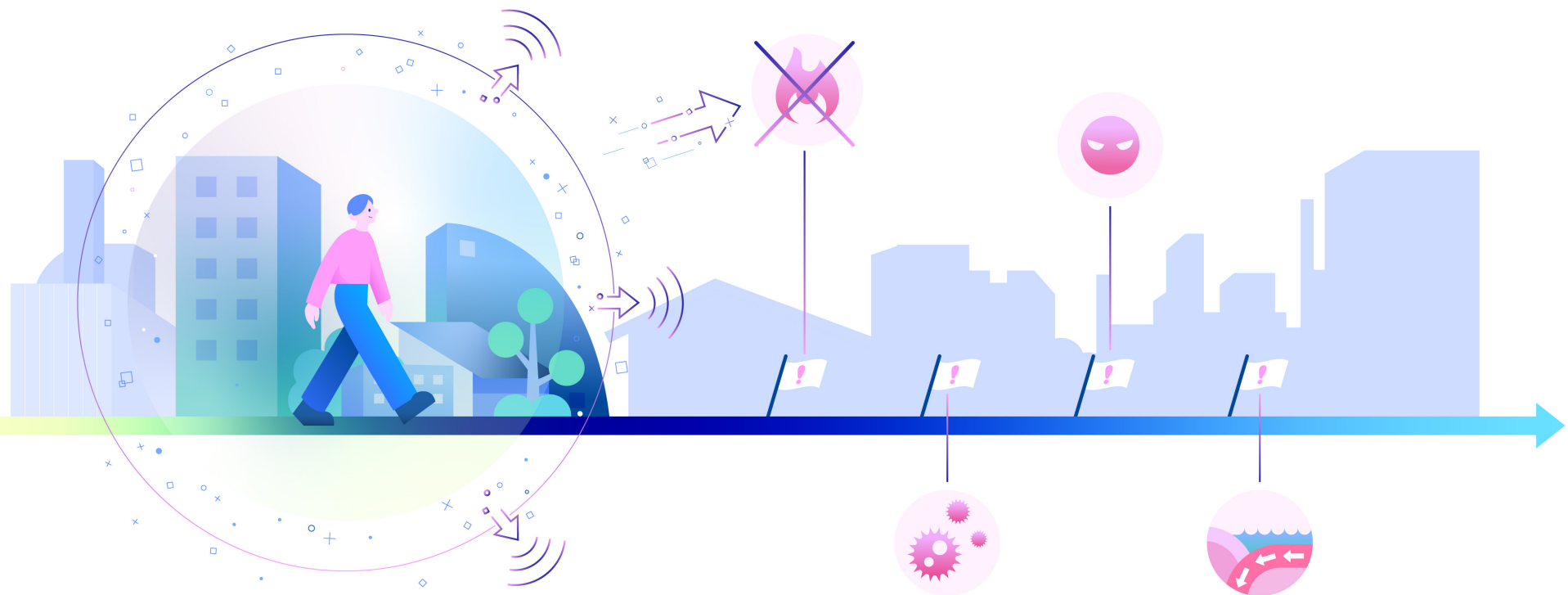
With the increasing complexity of social imperatives, contributing factors are expected to become ever-more intertwined. SECOM recognizes the importance of promptly identifying not only issues that have arisen, but also those with the potential to arise, as risk factors.



Latent risks

CONCEPT

SECOM defines delivering Peace of Mind through Anticipation as detecting signs of impending issues and promptly taking action to avert concerns.



Through the development of proactive services, SECOM will establish a new benchmark for peace of mind.

FEATURE

Delivering Peace of Mind through Anticipation: Society in the Future



SECOM will strive to predict gradually changing risks in daily life that transcend the boundary between the routine and the unexpected. As well as responding when issues arise, SECOM will take preemptive steps to ensure peace of mind whenever and wherever necessary.

STRATEGY

Strategies for Realizing
Peace of Mind through Anticipation

Developed in response to diversifying needs, the ANSHIN Platform concept describes a service infrastructure built in collaboration with partners in industry, government and academia who share SECOM's philosophy.

The integration of data and services obtained from multiple points of contact with these partners, and with customers, will facilitate the early detection of signs of impending issues and position SECOM to provide Peace of Mind through Anticipation.



DRIVING FORCE

Key Factors Driving the Implementation of Strategies



Thanks to its outstanding sensor technologies and operating capabilities, SECOM is uniquely positioned to create proactive services.

Looking ahead, SECOM—which to date has leveraged sensor technologies to respond to issues detected—will strive to remain abreast of changing social imperatives by advancing its fusion of people and technologies through the integration of various types of data, thereby reinforcing the ANSHIN Platform and facilitating the development of proactive services.

With the aim of promoting ANSHIN as a universally recognized term synonymous with peace of mind, SECOM will continue working to deliver Peace of Mind through Anticipation in markets around the world, as well as in Japan, by extending services customized to reflect local sensibilities.

SECOM is also bolstering global collaboration to further strengthen the ANSHIN Platform.

**Capitalizing on the ANSHIN Platform,
SECOM will work to extend proactive services
that deliver “Peace of Mind through Anticipation.”**

SECOM will continue to evolve, in line with its goal of providing
enduring peace of mind to an ever-changing society.

The logo for SECOM, featuring the letters 'SECOM' in a bold, sans-serif font. The 'S', 'E', and 'M' are dark blue, while the 'C' and 'O' are a teal color.