

SECOM

### Responding promptly and effectively to increasingly diverse and sophisticated customer needs

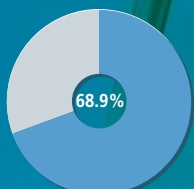
In recent years, social change has aggravated the risks people face and contributed to the emergence of new sources of unease. These include the increasing frequency and brutality of break-ins, corporate and personal information theft, health issues in an aging society and crimes targeting children and schools. With the threats to safety and security becoming progressively more varied, the needs of customers are growing increasingly diverse and sophisticated.

To respond promptly and effectively to such needs, SECOM has drawn on its accumulated expertise in the provision of security services and technological development, as well as its extensive network and highly professional service capabilities, to develop distinctive products and services. Today, our portfolio encompasses security, medical, insurance, geographic information, information and communication related and other services businesses. In our quest to contribute to a society free from apprehension, we are focusing our efforts on the development of innovative new offerings. Overseas, we are accelerating the expansion of our security services business in Asia, particularly in the PRC, which continues to show rapid economic growth.

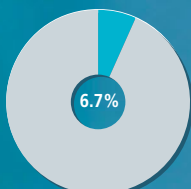
In the following pages, we present a summary of recent business activities and our efforts to respond to the changing environment.

Percentage of consolidated net sales and operating revenue  
(Excluding intersegment transactions)

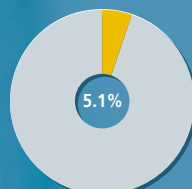
Security Services



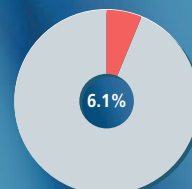
Medical Services



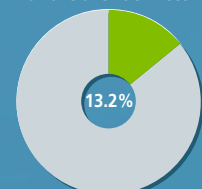
Insurance Services



Geographic Information Services



Information and Communication Related and Other Services



# Commercial Security Services



## Solutions for Businesses

Tokyo's Omotesando quarter of the Shibuya ward is world renowned as a center of fashion. The new heart of this vibrant hot spot is Omotesando Hills, which opened in February 2006 and has quickly become a leading catalyst of fashion and cultural trends.

Omotesando Hills has six floors above ground and six below. Thirty-eight apartments extend across the upper floors. The lower floors house high-profile fashion boutiques, restaurants and other commercial tenants.

Large-scale security systems for this exciting new complex were provided by SECOM.

Photo courtesy of Mori Building Co., Ltd.



### **Sophisticated Security Systems for Large Complexes**

Urban redevelopment and other factors have contributed to the emergence of large complexes that are essentially self-contained communities, combining offices, housing and commercial facilities. The effective management of such complexes demands sophisticated security systems that protect people and property from crime and unexpected hazards. Such systems are also a key sales point for individuals and companies considering moving into such complexes. By marrying our services, products and know-how, we develop and provide security systems tailored to specific requirements.

Basic security systems for large complexes encompass on-line security and static guard services, thus providing comprehensive protection against crime and monitoring of facilities. Such systems combine the advantages of technologically advanced security systems with the split-second decision-making abilities and practical skills of trained professional guards. We adapt these systems to customer needs by adding

various services and products to this basic package. Our unique capabilities in this area are evidenced by the many security systems we have provided for large complexes throughout Japan.

Going forward, we will continue to maximize our expertise in security services, advanced network technologies and Group capabilities to respond to the needs of this growing market.

### **Customized Security Services for Large Sites**

We also offer extensive experience and expertise in security management for large sites. With the emergence of various new factors threatening public security in recent years, the security needs of factories, schools, housing complexes, shopping centers and other facilities situated on large sites are expanding. Such needs include not only the protection of buildings but also surveillance to prevent unauthorized site entry. For most facilities, however, the cost of positioning static guards and installing surveillance cameras over such large sites is prohibitive.



A SECOM control center

## Commercial Security Services



SESAMO TRII comprehensive access-control system

equipment, files, and medical records is to install a system that controls access to key rooms, thereby keeping track of who goes where and when. We offer a variety of options, from simple systems that limit access to advanced access-control systems, thereby enabling us to respond to a broad range of customer needs. SESAMO TRII, an access-control system that can be integrated with our on-line security systems to provide comprehensive protection, controls access through up to 400 doors, or 50,000 individuals, per location. This system can also be used to link a company's head office with multiple sites via a network to ensure effective access control for up to 200 locations in total. Because the entire system can be administered from a single personal computer, SESAMO TRII is particularly appropriate for, among others, large buildings, large factories and companies with multiple sales offices. The SESAMO series also includes high-precision identification systems that use biometric data, including SESAMO IDs, a fingerprint identification system, and the recently introduced SESAMO IDj, which identifies individuals using the veins in their palms.



SECOM Robot X outdoor surveillance robot

In response, we have developed a customized crime prevention solution featuring the Border series, an outdoor site surveillance system that uses infrared technology, thus reducing the number of cameras needed, and SECOM Robot X, an outdoor surveillance robot, as well as static guards.

Closed-circuit television (CCTV) systems are also an effective way to prevent information leaks and crimes. Our CCTV systems use a configuration that enables the transmission of images captured by cameras as digital data directly to a controller, ensuring the recording and display of sharp, detailed images.

### Protecting Crucial Information

The implementation of Japan's Personal Information Protection Law in 2005 has increased awareness of the need to ensure the security of information among our customers. Several recent incidents involving personal information leaks have heightened the need for organizations to ensure effective information management. As a consequence, the number of companies, hospitals and other organizations turning to SECOM for security services is rising sharply.

Today, many companies are actively seeking to enhance their information management capabilities. This trend is spurring firm growth in demand for SECOM's on-line security, access-control systems and surveillance camera systems.

SECOM access-control systems have earned high marks from customers seeking information security solutions. One of the most effective ways to prevent the theft of personal computers and other information

### Security Services for Retail Facilities

SECOM boasts a solid track record in the provision of security services for retail facilities. On-line security system SECOM IX enables

CCTV system





store employees to request remote monitoring from a SECOM image monitoring center by pushing a call button or lifting the receiver on a special SECOM phone should they, for example, see anyone acting suspiciously or being harassed or otherwise troubled by a person who is intoxicated on their premises. If there is a threat of robbery or physical violence, store employees can push an emergency button to alert a SECOM image monitoring center and simultaneously transmit a color image and voice recording. Image monitoring center staff examine the images and, if necessary, broadcast a warning through speakers mounted in the store and dispatch emergency response personnel. When necessary, staff also alert the police.

We also offer the Electronic Article Surveillance (EAS) shoplifting prevention system, which responds to the needs of retailers for more effective security during operating hours. With shoplifting incidents on the rise in Japan, the impact on storekeepers of related losses is increasingly apparent. We will continue to step up marketing of the EAS shoplifting prevention system through our nationwide network of sales offices with the aim of cultivating new markets.

### Venturing into the PFI Field

SECOM led a consortium of 12 companies that secured the contract to build, maintain and operate a private finance initiative (PFI) correctional facility in the city of Mine,

SECOM emergency response personnel



Yamaguchi Prefecture. PFIs use private-sector capital and management and technological know-how to build, maintain and operate public-sector facilities. The Ministry of Justice invited numerous groups to participate in an open competition for this facility that gave consideration to both bid price and proposal content. As a consequence, the tender submitted by the SECOM-led consortium was selected. This success is also testament to the Ministry of Justice's positive appraisal of our superior expertise in providing security for large-scale facilities.

Construction of the correctional facility in Mine began in January 2006. The facility is scheduled to open in April 2007. Except where the exercise of public authority is required, the facility will be managed by private-sector participants. The scope of private-sector responsibility thus encompasses the provision of capable, efficient management services. We will also provide effective correctional education and vocational training. The facility will be equipped with a location-positioning system to keep track of inmates at all times, high-impact, break-resistant window glass rather than iron bars and an advanced security system.

In addition to being the first correctional facility to be built as a PFI in Japan, the correctional facility in Mine is SECOM's first venture into the PFI field. This project will thus enable us to secure new expertise in PFIs and correctional facility management. Participating in this PFI also allows us to contribute to society by promoting inmate rehabilitation through education and training, as well as to revitalize the local economy by purchasing goods and creating employment opportunities.



Correctional facility in Mine, Yamaguchi Prefecture

Correctional facility in Mine, Yamaguchi Prefecture



# Home Security Services



# Peace of Mind for the Home



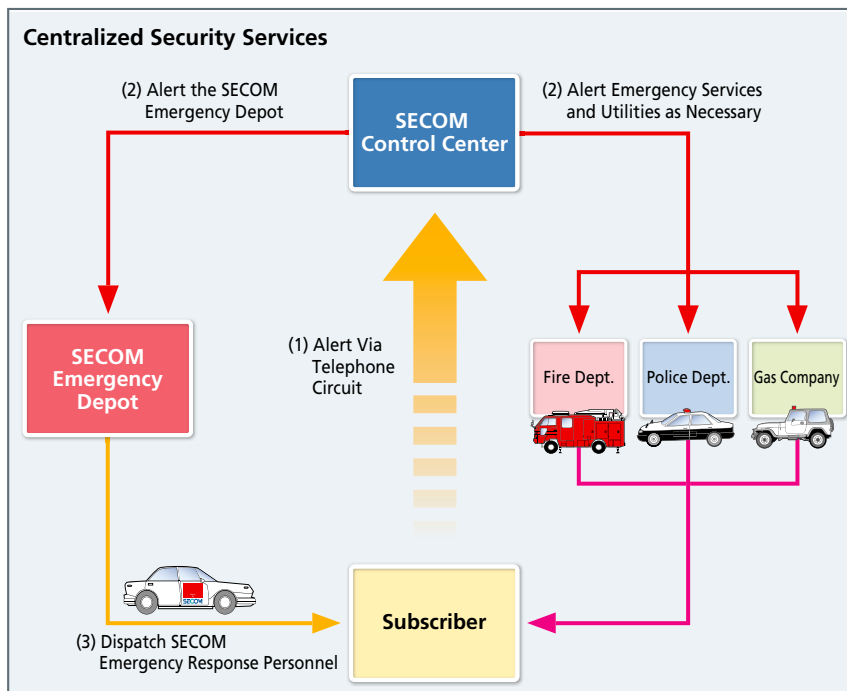


## SECOM's Evolving Home Security Services

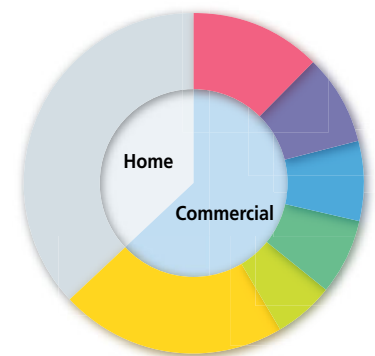
SECOM is also a pioneer in the provision of home security services in Japan. We have provided security for our subscribers' residences for the past 25 years, since launching SECOM Home Security in 1981. Today, SECOM Home Security, an on-line security system that offers round-the-clock monitoring of homes for intruders, fires, gas leaks and medical emergencies, is an essential prerequisite to safe and secure living for customers throughout Japan. Our reliability and high service standards have earned a solid reputation for the SECOM brand.

The market penetration of SECOM Home Security has been accompanied by the broadening of our customer base, which now ranges from young people living alone to people in their 30s and 40s with families and seniors. Recognizing that the security

needs of our customers vary significantly depending on lifestyle, in May 2006 we launched an updated SECOM Home Security system. The new system comes in four versions developed for dwellings of different sizes: condominiums, small houses, average-sized houses, and houses that have a large number of rooms or are designed to accommodate multiple generations of one family. Customers are therefore able to select the version that best suits their home. We have also introduced such new service options as the Entry Delay function, for times when a member or members of the family are not expected to return until after the rest of the family has retired for the night, and the Daily Life Monitoring function, developed for seniors living alone, which alerts SECOM if no movement is detected in the residence for a specified interval.



**Commercial and Home Security Service Subscribers by Category**  
(At March 31, 2006)



Service industries	12.4%
Retailing/wholesaling	8.6%
Financial services	7.6%
Manufacturing	7.2%
Government agencies	5.7%
Others	21.5%
Households	37.0%

## Home Security Services



SECOM Home Security system



SECOM Home Service lifestyle support services

### SECOM sticker



In Japan, new homes for which construction begins after June 1, 2006, will be required by law to have fire alarm systems installed in bedrooms, stairways and other areas. By May 31, 2011, all residences will also be obliged to install fire prevention systems that meet standards set by local authorities. We offer a buzzer-equipped fire alarm that can be connected to the SECOM Home Security system. Going forward, we will endeavor to expand sales of the SECOM Home Security system by informing potential customers about the benefits of this alarm.

### SECOM shop



### SECURIFACE intercom system



## Enhancing Safety and Security for Families

We continue to introduce new service options with the aim of adding value to the SECOM Home Security system and expanding sales. One example is SECOM Medical Club, a membership-based health management service that is designed to relieve the health concerns of SECOM Home Security subscribers. This service capitalizes on the expertise of our medical services business and gives subscribers access to telephone health counseling and Internet-based checklists for lifestyle-related illnesses. In addition, we have begun offering SECOM Home Service, a suite of lifestyle support services that is offered to SECOM Home Security subscribers. Through SECOM Home Service, we assist customers with problems arising in everyday life, such as lost keys and broken windows. This service also includes support for house cleaning and other housework, external checks of customers' premises and patrol services. Initially, we are focusing our marketing efforts for this service in the Tokyo and Osaka metropolitan areas, both major population centers. Customer response





to SECOM Home Service has been outstanding and its launch has contributed to an increase in home security system contracts. Going forward, we will continue to add new services that enhance safety, convenience and comfort, thereby ensuring customers are satisfied they chose SECOM.

Recent years have seen an increase in residential break-ins that occur when the occupants are at home and result in physical assault as well as the theft of property. To protect people in their homes from such danger, we offer an extensive selection of products designed to enhance the safety and security of residential interiors, doors and windows, and exteriors, including fences and gardens. These include SECOM *Anshin* Glass, a specially made high-impact, breakage-resistant window glass with built-in sensors; External Image Monitoring Service and SECOM Home Camera System, designed to reinforce exterior security; and SECURIFACE, an intercom system that features a built-in face detection function that recognizes when the person at the door is hiding his or her face from the camera.

### Condominium Security Systems

In addition to security systems for houses, SECOM provides a wide range of systems designed to respond to the unique security concerns of condominiums and other types of housing complexes. With break-ins an increasingly serious problem for condominiums today, the need for effective security systems is rising. Since launching SECOM MS-1—Japan's first security system exclusively for condominiums—in 1987, we have introduced several systems, including SECOM MS-2 and SECOM MS-3. SECOM MS-3 not only offers improved security capabilities, but also incorporates a wide range of functions that enhance the convenience of condominium living. Another key feature of SECOM MS-3 is its extensive coverage, enabling it to provide security for up to three buildings in a single complex, or a total of 4,000 households, simultaneously. Security can be further strengthened with the installation of SECOM IX, which provides remote surveillance of common areas. SECOM's condominium security systems thus help ensure condominiums are secure and comfortable.

SECOM's security systems provide comprehensive support for safe and comfortable homes. Going forward, we will strive to reinforce our competitive advantage in the home security market by expanding our lineup with new services that respond to customer needs and bear the SECOM mark of quality.



Image monitoring center

SECOM MS-3 condominium security system



## Other Security Services



COCO-SECOM mobile security systems

### Sharply Increasing Demand for COCO-SECOM Services for Children

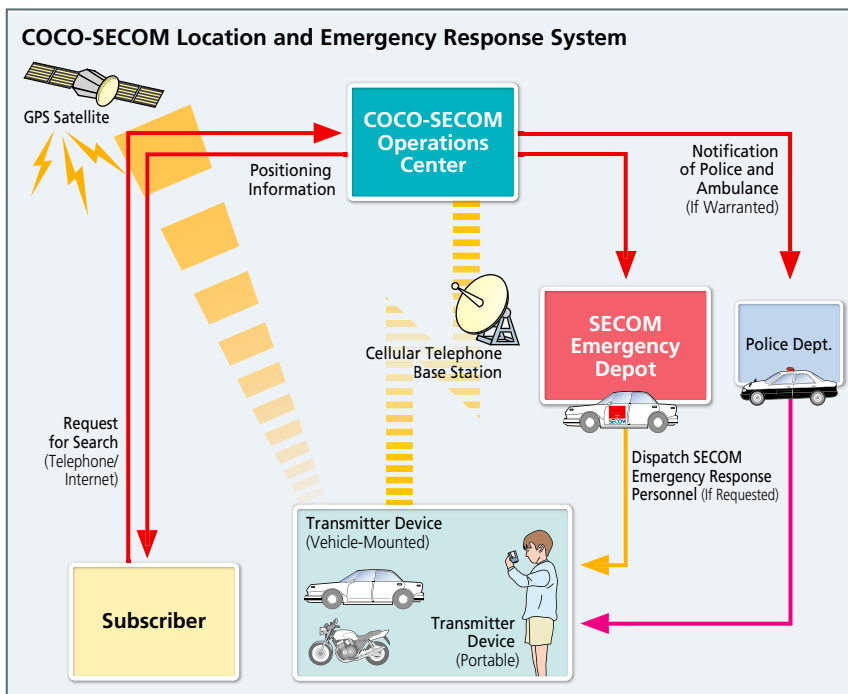
We have expanded our services capabilities from commercial and residential security to security for people and property on the move. With the launch of COCO-SECOM mobile security systems for individuals in 2001, we created an entirely new market. COCO-SECOM uses Global Positioning System (GPS) satellites and cellular telephone base stations to pinpoint locations with an accuracy of within five to 10 meters under optimum circumstances. Emergency response personnel are on standby round-the-clock for dispatch to any location if a subscriber requests assistance—a level of service facilitated by SECOM’s unique security services capabilities. COCO-SECOM services were initially developed to locate people and vehicles. Today, we also offer services for locating cash and valuables cases, safes, automated teller machines (ATMs) and pets, as well as for simultaneously tracking commercial vehicle fleets and employees.

COCO-SECOM operations center



Today, COCO-SECOM is attracting attention as an effective means to prevent child disappearances and abductions, resulting in an increase in the number of people equipping their children with COCO-SECOM transmitter devices. Approximately one-fourth of all COCO-SECOM subscriber contracts are for services for locating children. On more than one occasion, COCO-SECOM has assisted in the location and rescue of a child. To protect children traveling between home and school, we provide COCO-SECOM for Olivier Navirand school bags and the PRESAVE elementary school uniforms through business alliances with the manufacturers of these items. Both the school bags and the uniforms have earned high marks from parents.

To teach children about potential dangers, we supervised production of a picture book and an animated film. The picture book, *Suu, the White Ghost*, was overseen by a committee of SECOM employees with children, and features content and visuals for children and their parents to enjoy together. The animated film, *Kin-Q Kids: Rescue Team*, was put together with the aim of teaching children ways to avoid danger. We contributed by providing crime-prevention expertise and methodologies based on analysis of data and actual incidents. The film was shown on satellite and cable television channels for children and has since been released on DVD and video.



# Security Services in Overseas Markets



## Expanding Operations in the Growing PRC Market

In 1978, we established operations in Taiwan, our first overseas market. Shortly thereafter, we expanded into the Republic of Korea (ROK) and the United States. We then secured access to the markets of Europe and Oceania by setting up operations in the United Kingdom and Australia, and extended our presence in Asia by branching out into Thailand, Malaysia, Singapore, Indonesia and the PRC. We provide the same high-standard services in all of these markets as we do in Japan. Of particular note, our affiliates Taiwan Secom Co., Ltd., in Taiwan, and S1 Corporation in the ROK, enjoy the top shares of their respective security services markets.

In recent years, our efforts have focused on the expanding economies of Asia, particularly the PRC, where rapid economic growth is prompting greater demand for security. To enable us to provide security services in the PRC, in 1992 we set up holding company Secom (China) Co., Ltd. Since then, we have established security services subsidiaries in the key cities of Dalian, Qingdao, Beijing and Shanghai. Through these companies, we extend security services of the same level as in Japan, that is, services that feature not only remote surveillance, but also emergency response services.

To take advantage of the massive security services market of the PRC, in July 2005 we set up a security services company—our fifth local subsidiary—in the city of Shenzhen. Located north of Hong Kong, Shenzhen was declared a special economic zone in 1980. Since then, the city has grown into a major center thanks to the investment of foreign capital. In this and other ways, it is emblematic of the PRC's economic rise. With the new company, we have succeeded in creating a solid business foundation in the PRC's key coastal economic areas. We will continue to draw on this foundation to provide a wide range of security services to customers in the PRC, a center of increasing global economic importance.



Shanghai Secom Security Co., Ltd.'s control center



The Crown Court of London in the UK—a customer of Secom Plc



# Medical Services



Comfort Garden Azamino

In line with rising demand, we have expanded our network of SECOM visiting nurse stations, which dispatch nurses to patients' homes, to 37. Accordingly, we will continue to provide superior home nursing services that emphasize the patient's perspective, thereby providing peace of mind as well as a high level of patient satisfaction.

### Expanding into New Businesses

Health issues are one of the chief causes of concern among the elderly. We are seeing a rise in interest in products and services that contribute to the maintenance or improvement of health, evidence of the increasing number of people that see investments in their own health as money well spent. With the needs of such people in mind, we have established SECOM Health Care Club. A membership-based club operated by subsidiary Secom Medical System Co., Ltd., in alliance with Anshinkai, an incorporated medical institution, SECOM Health Care Club aims to ensure the prevention and early detection of serious illnesses. Members have access to advanced positron emission tomography (PET)/computerized tomography (CT) scanner and other advanced medical equipment at Yotsuya Medical Cube, a clinic in Tokyo, as well as full physical examinations and health management consultations with a regular physician.

Another key new business is the SECOM-FORT series of nursing homes. We have built up a solid reputation in this field through the Sacravia Seijo and Royal Life Tama—two high-end nursing homes—and the Alive Care Home series of nursing homes, which provide full-time care services. The SECOM-FORT series capitalizes on the know-how accumulated through the management of these facilities and brings together our expertise in such areas as security, medical

### Increasing Demand for Home Nursing Services

Eliminating fears about family health is crucial to security and peace of mind. Relieving concerns over health and illness is an important part of our commitment to realizing a society free from apprehension. Accordingly, in 1991 we launched our medical services business. With one in five people in Japan today over the age of 65, concerns over the future of health and medical care are multiplying.

Our medical services business began with the provision of home medical services, the first time such services were offered in Japan. Our various home medical services include home nursing services and pharmaceutical delivery services, demand for which continues to expand. Home nursing services are provided by nurses who visit patients in their homes and provide nursing services in line with the instructions of the patient's physician. The skilled and experienced nurses we employ are highly evaluated by patients.

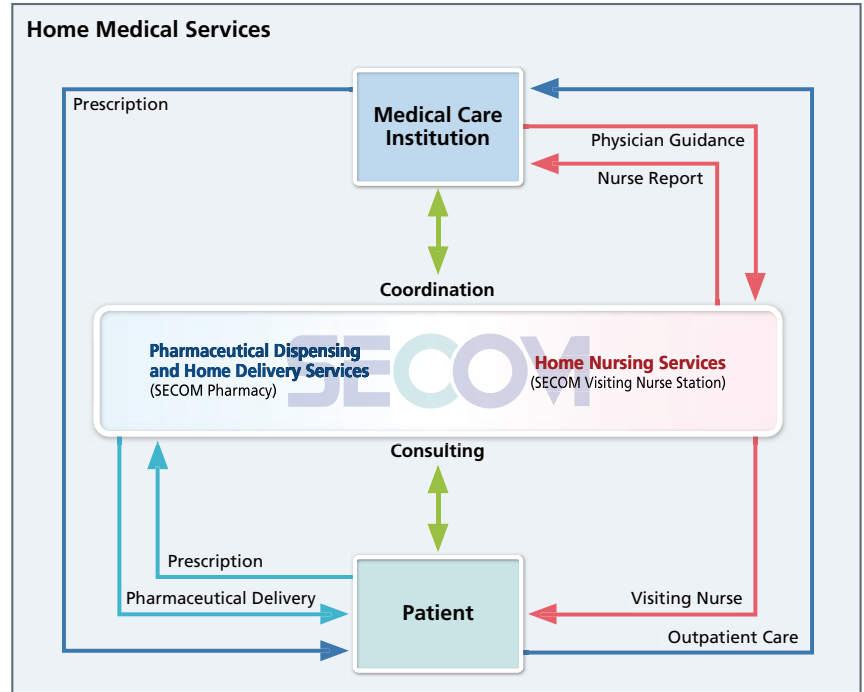
Home nursing services





care and personal care. In October 2006, we will open Comfort Garden Azamino in Yokohama, the first nursing home in the SECOMFORT series. This facility will feature an adjacent on-site clinic and offer health management services for residents. Residents requiring care will be able to take advantage of the services of skilled, compassionate nursing and care staff in the comfort of their rooms. Should a resident require round-the-clock care, he or she will be moved to a special room within the building to be attended to by expert staff. We have also developed a security system for the SECOMFORT series that is easy for seniors to operate, thereby enhancing the peace of mind of residents. The second SECOMFORT nursing home, Comfort Hills Rokko, is scheduled to open in Kobe in June 2009. We will continue to expand the SECOMFORT series, focusing on the goal of providing safe, secure and comfortable residences that enable seniors to enjoy active, fulfilling lives.

On another front, we engage in the lease and sale of a wide range of medical equipment. Among these, our automated external defibrillators (AEDs) continue to perform particularly well. AEDs are devices that administer an electric pulse to the heart to reestablish a normal rhythm. Their use by members of the general public, that is, by individuals who are not licensed physicians or paramedics, was approved by Japan's Ministry of Health, Labour and Welfare in July 2004. Subsequently, we introduced the SECOM AED Package Service, a service package featuring an AED that we lease to individuals and organizations and for which we provide regular maintenance and round-the-clock support. To date, the SECOM AED Package Service has been adopted by a variety of customers, including sports facilities, government and municipal offices, companies, airports, health and welfare facilities,



schools and hotels. Narita International Airport, for which we provide static guards and other security services, has adopted the SECOM AED Package Service to help ensure better security for airport users. By expanding SECOM AED Package Service subscriptions, we hope to contribute to an increase in the number of lives saved.

Going forward, we will aim for further growth by developing and providing quality medical services that are trusted and appreciated by our customers.



SECOM AED Package Service

AED



# Insurance Services



Secom General Insurance Co., Ltd.



New SECOM Anshin My Car on-site emergency services

### SECOM's Unmatched Policies

We provide seamless offerings that combine security services and non-life insurance to ensure greater peace of mind. Security services ensure prior protection, while the non-life insurance looks after customers in the event of misfortune. These offerings are made possible by our non-life insurance subsidiary, which has developed a lineup of distinctive policies.

SECOM *Anshin My Home*, for example, a policy designed for households, takes into account the reduced risk in homes that have installed security systems to offer up to a 50% discount on premiums. This same concept underlies the Security Discount Fire Policy, which offers up to a 30% discount on premiums to commercial premises that have installed security systems, recognizing this as a risk-lowering factor. New SECOM *Anshin My Car* is a comprehensive automobile insurance policy that offers round-the-clock on-site support services by emergency response personnel in the event of an automobile accident. The knowledge that professional emergency response personnel are there to help any time and anywhere is a significant factor in ensuring security and peace of mind for vehicle owners.

We also offer MEDCOM, an unrestricted cancer treatment policy that provides coverage for all hospitalization and medical treatment costs. "Unrestricted" means that MEDCOM covers the cost of treatments not covered by Japan's national health insurance scheme and thus normally borne by the patient. MEDCOM also covers the portion of costs that individuals bear for cancer treatments covered by the national health insurance scheme. This ensures subscribers are able to take advantage of advanced treatment options without having to worry about the frequently prohibitive costs.

We will continue to maximize the capabilities of the SECOM Group to develop and market innovative and attractive new insurance offerings.

MEDCOM consultants



# Geographic Information Services



## Providing Security and Peace of Mind in the Event of an Earthquake

Pasco Corporation provides a wide range of innovative geographic information services and is a leader in geographic information system (GIS) and surveying and measuring services. Frequent earthquakes in recent years have heightened awareness of the need to minimize the scale of disaster in the event of a major tremor. If a major, vertical-thrust earthquake were to hit Tokyo, for example, the resulting disruption of public transport would strand millions of commuters with no way to get home from their workplace. Companies are thus coming under increasing pressure to ensure their employees are able to return home safely in the event of such a disaster. Pasco has responded by developing a mapping service that searches for the safest routes to take between employees' homes and workplaces, based on such considerations as earthquake vulnerability, as disclosed by the prefectural authorities, and the presence of facilities and roads designated for the provision of assistance to stranded commuters. By inputting the appropriate departure and arrival locations into the computer, companies can generate maps for each individual employee. The service also enables companies to determine how many employees at its different offices are unable to return home, thereby allowing it to determine the quantities of food and other supplies it needs to store. In the event such a disaster occurs at night or on a public holiday, companies can also determine how many of their employees live close enough to walk to work, making it possible to formulate plans for the resumption of operations. This mapping service is also available to individuals, permitting them to access information via the Internet to create maps for their families, and is thus useful in protecting homes and families in disaster situations.

## Geographic Information Services for Global Markets

Although headquartered in Japan, Pasco has established bases in the PRC, Thailand, the Philippines, India, Indonesia, the United States and Finland, and built a global network linking it with companies and universities, enabling it to provide high-quality, high-precision geographic information services in markets around the world.

Pasco is also responding to a rising need, particularly in developing countries in Southeast Asia, for accurate domestic topographic maps, using its advanced surveying and measuring technologies and GIS to assist map-making efforts.

Recently, Pasco became a distribution partner for TerraSAR-X data products, obtaining exclusive rights to sell these products in Japan and rights to sell them worldwide. TerraSAR-X is a synthetic aperture radar (SAR) satellite scheduled for launch in October 2006. With TerraSAR-X, it will be possible to obtain 1:25,000 scale geographical data for all of Japan in one month, compared with 4.5 years with a conventional satellite employing a telecentric optical imaging instrument. This capability will enable Pasco to provide information, monitoring and damage assessment in real time when earthquakes, tsunami, typhoons, volcanic eruptions and other natural disasters occur.



Safe Route Mapping Service



TerraSAR-X

# Information and Communication Related and Other Services



SECOM Safety Confirmation Service

## Providing Comprehensive Disaster Response Support Services for Corporate Customers

SECOM's disaster response support services include the SECOM Safety Confirmation Service, a comprehensive service for commercial subscribers that helps companies to confirm promptly the whereabouts and safety of

employees and their families and collect information in the event of a major disaster, thereby relieving concern and assisting companies to reopen for business as soon as possible. This service also offers round-the-clock, dedicated support personnel, ensuring a prompt response in the aftermath of a disaster. Services are offered on a rental basis, making it possible for customers to avoid administrative hassles of purchasing and installing systems.

Responding to calls for more effective countermeasures against natural disasters, we applied our expertise to the development of the SECOM Disaster Response Support Service. Designed with the aim of minimizing disaster-related losses through prompt, effective action, the SECOM Disaster Response Support Service encompasses the preparation of initial response manuals, which can also be made accessible via the Internet and/or cellular phone, as well as management and replenishment of emergency equipment inventories.

valuable information. The facility houses customers' servers and sees to the operation, monitoring and maintenance of connections to the Internet. The building is guarded around the clock by static guards, access-control systems and surveillance cameras, applying our know-how in the area of physical security. Cyber security services include protection against Internet-based intrusions and viruses and the provision of digital authentication services. The Secure Data Center currently operates the digital certificate authorities of a number of Japan's pre-eminent financial institutions, underscoring recognition of the high level of security it delivers, as well as customer confidence in our information security capabilities.

## Safe and Secure Glorio Condominiums

Developed in line with a concept that emphasizes peace of mind and quality lifestyles, SECOM's Glorio series of condominiums boast sophisticated security. All units offer our on-line security system as a standard feature. Glorio condominiums can also feature break-resistant SECOM *Anshin* Glass window glass; SECOM IX, which provides surveillance of the entrance hall and individual elevators; and the SECOM AED Package Service, for assisting individuals experiencing acute heart trouble. The Glorio series also offers Glorio Support 24, round-the-clock condominium management services that enable residents to call late at night or on holidays when no guards are present. Today, security is one of the most important considerations in condominium purchasing decisions. We will continue to develop and sell attractive condominiums that deliver both quality and peace of mind.

Secure Data Center



## Security for the Information Age

SECOM is also answering the call for better information security. The Secure Data Center integrates our unparalleled physical and cyber security services expertise to provide a highly secure environment for subscribers'