

2030 VISION

SECOM GROUP

The Purpose of the SECOM Group's Vision for 2030

The fiscal year ending March 31, 2018, marks the 55th anniversary of SECOM's establishment.

The SECOM Group is working to realize its Social System Industry vision, operating in an environment characterized by drastic change and increasing uncertainty. As part of this process, the Group has formulated a vision for 2030 that further defines its future direction, with the aim of encouraging pride amongst its employees, inspiring trust amongst its customers and instilling awareness of SECOM's possibilities amongst all stakeholders.

Contents

The Purpose of the SECOM Group's Vision for 2030

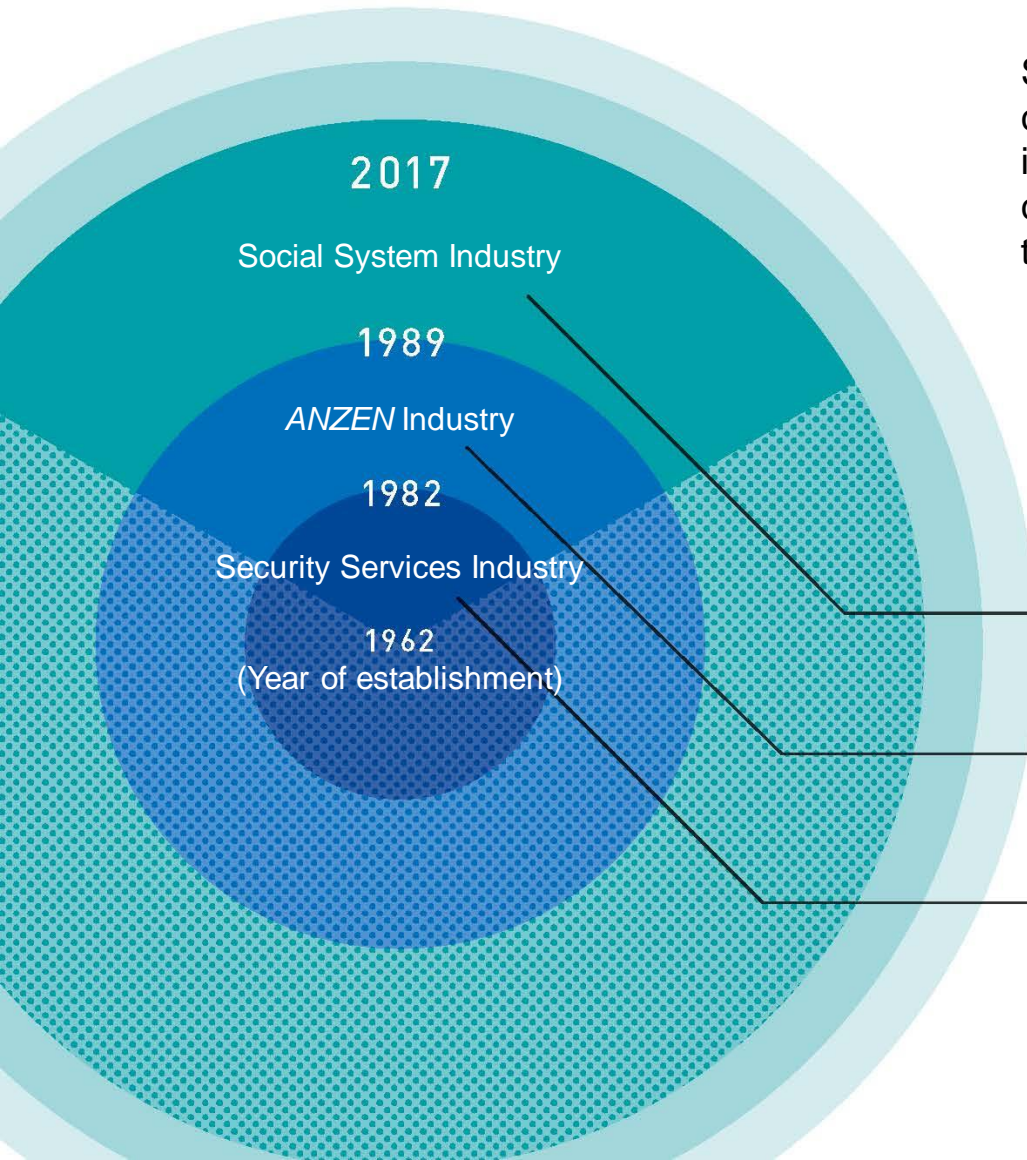
1. The History of SECOM	4
2. Competitive Advantages	5
3. Significantly Evolving Social Imperatives	6

The SECOM Group's Vision for 2030

4. SECOM's Vision for 2030	8
5. What is the <i>ANSHIN</i> Platform?	9
6. Conceptual Framework of the <i>ANSHIN</i> Platform	10
7. Features of the <i>ANSHIN</i> Platform	11
8. Services to be Provided under the <i>ANSHIN</i> Platform	14
9. Strategies for Creating the <i>ANSHIN</i> Platform	15
10. Key Factors Driving the Implementation of Strategies	16
11. Global Expansion	17
12. Growth Projection	18

In Closing

HISTORY | The History of SECOM



Since its establishment in 1962, SECOM has contributed to society in various ways, in line with its duty to help achieve a society free from concerns and its commitment to providing services that better benefit society.

Provides services and systems that deliver safety, peace of mind, comfort and convenience

Expands beyond security services into such areas as healthcare and information and communications

Established as a pioneer in Japan's security services industry

STRENGTH

Competitive Advantages

Over the last 55 years, the SECOM Group has cultivated the following elements, which form its core strengths.



Human resources

SECOM's corporate philosophy (below) is understood and shared by all employees.

"Contributing to society through our business activities"

"A commitment to doing what is appropriate"*1

"A refusal to be content with the status quo"*2



Organization

SECOM has marshalled its diverse businesses to develop and advance innovative services.

ALL SECOM



Technologies

SECOM has created a business model that fuses people and technologies.

Approximately 2,800 emergency depots in Japan

Around 60,000,000 security sensors installed at subscribers' premises

*1 Judging the legitimacy of our actions by examining whether they are just, fair and beneficial, not only to SECOM but to society as a whole.

*2 Seeking constantly to extend novel services and systems by challenging accepted norms.



Performance

SECOM boasts close ties with society and a strong track record.

More than 3,000,000 security system subscribers

Over 5,700,000 SECOM Safety Confirmation Service users



Knowledge

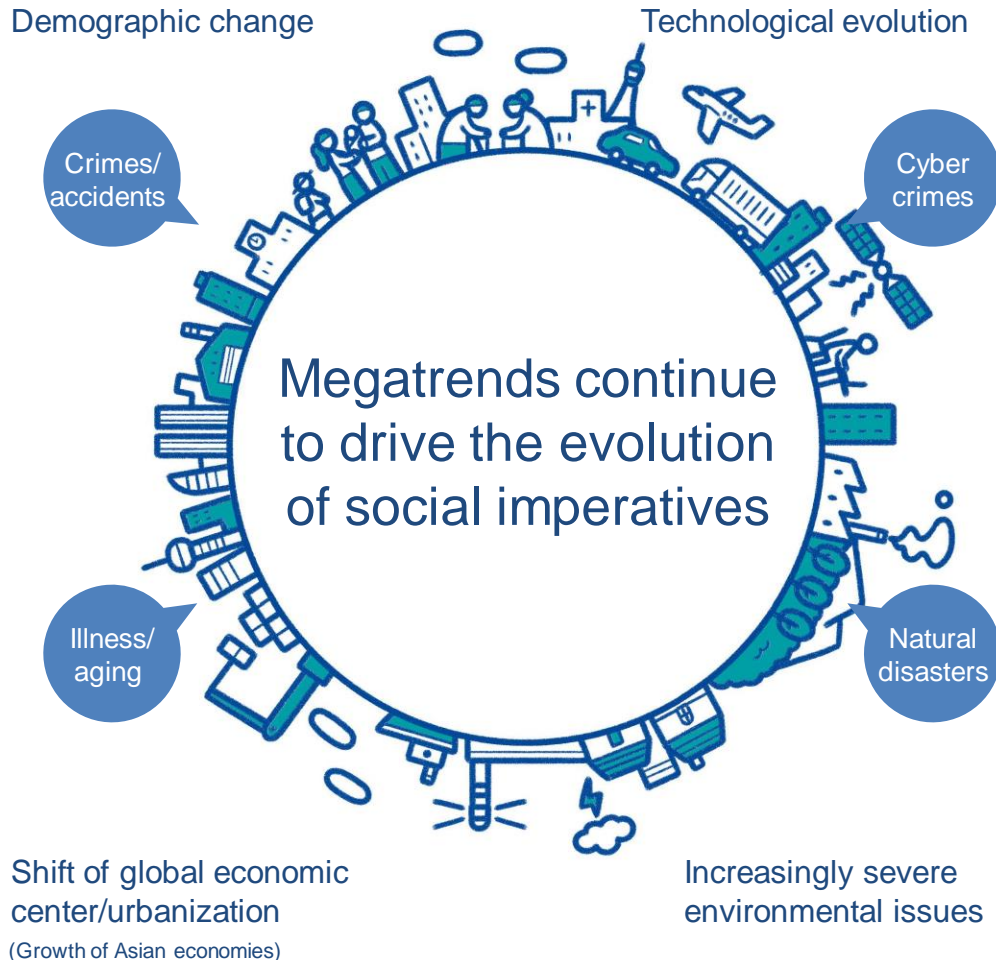
Know-how cultivated in Japan, a front runner in addressing critical challenges.

Initiatives for a super-aged society

Our experience in responding to frequent natural disasters

MEGA TRENDS

Significantly Evolving Social Imperatives



With the increasing complexity of social imperatives, ensuring peace of mind has become mission critical as individual needs for peace of mind increase and diversify.

A new social infrastructure that responds to such increasingly diverse needs is essential.

The SECOM Group's Vision for 2030

VISION

SECOM's Vision for 2030

By creating its *ANSHIN* Platform,
SECOM aims to provide enduring peace of mind
to an ever-changing society.



CONCEPTION

| Conceptual Framework of the ANSHIN Platform



SECOM will capitalize on the *ANSHIN* Platform to alleviate problems and resolve concerns through the seamless provision of services tailored to evolving social imperatives. The *ANSHIN* Platform will also further reinforce SECOM's relationship with customers and society.

FEATURE

| Features of the ANSHIN Platform 1/3

1. Provide services anytime, anywhere.



Peace of mind, whenever and wherever necessary

FEATURE

Features of the ANSHIN Platform 2/3



2. Provide optimal services tailored to individual customer needs

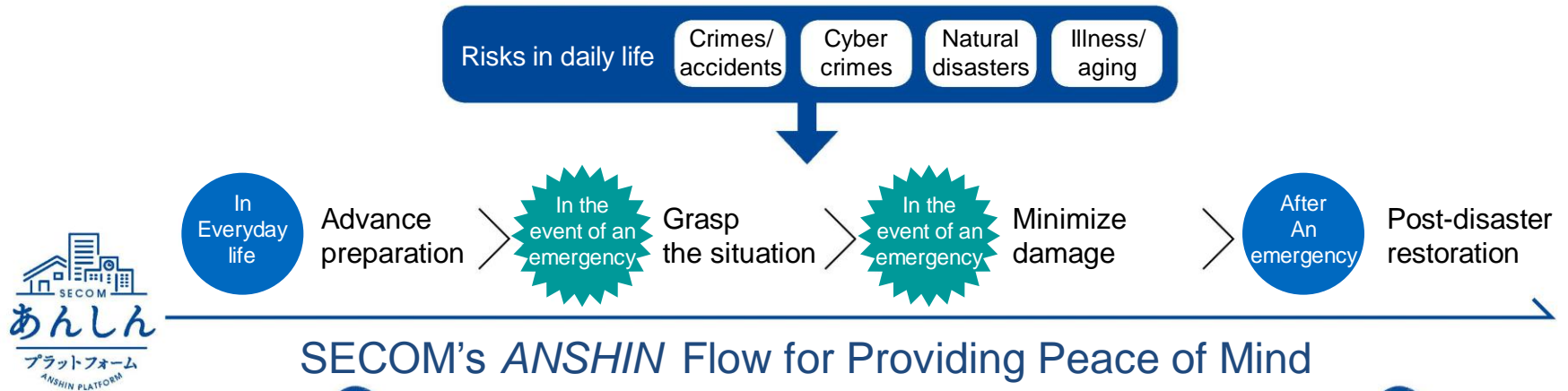


Peace of mind, for anyone and everyone

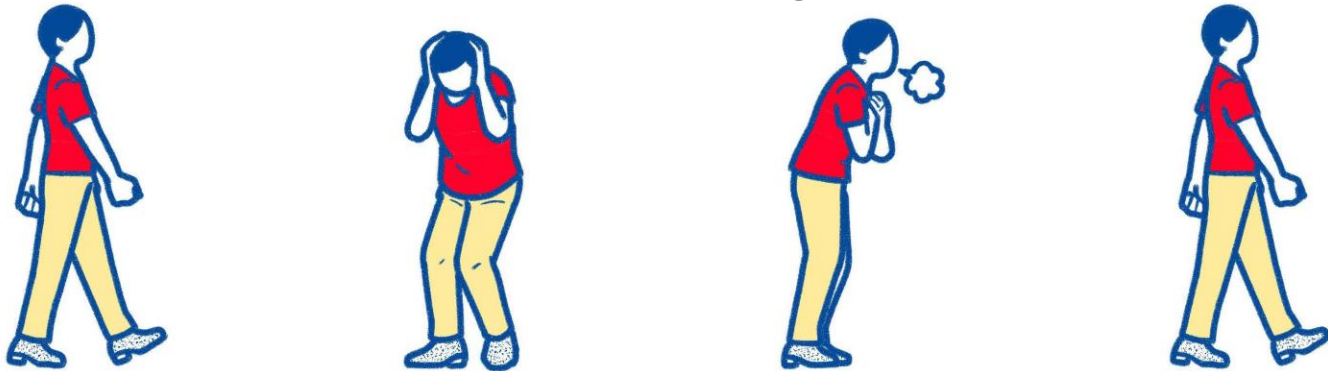
FEATURE

Features of the ANSHIN Platform 3/3

3. Provide seamless services centered on peace of mind



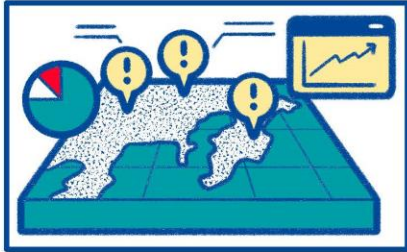
SECOM's ANSHIN Flow for Providing Peace of Mind



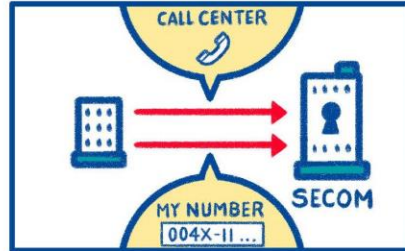
Peace of mind, seamlessly

SERVICE

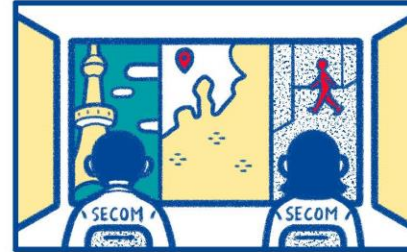
Services to be Provided under the ANSHIN Platform



Crime prediction



Secure business support



Disaster prediction and response



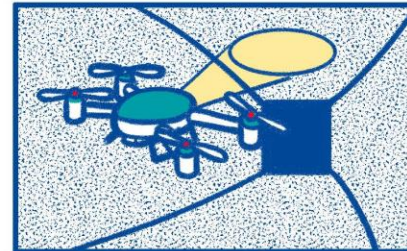
Healthcare and diagnostics employing AI



Blindspot-free security utilizing broader monitoring technologies



Effective and convenient cyber security



Automated inspections of social infrastructure



Virtual principal physicians



Robotics



Comprehensive lifestyle support tailored to each individual



Evacuation support during wide-area disasters



Lifestyle concierge

STRATEGY

Strategies for Creating the ANSHIN Platform

Strategies for further strengthening SECOM's relationship with customers and society



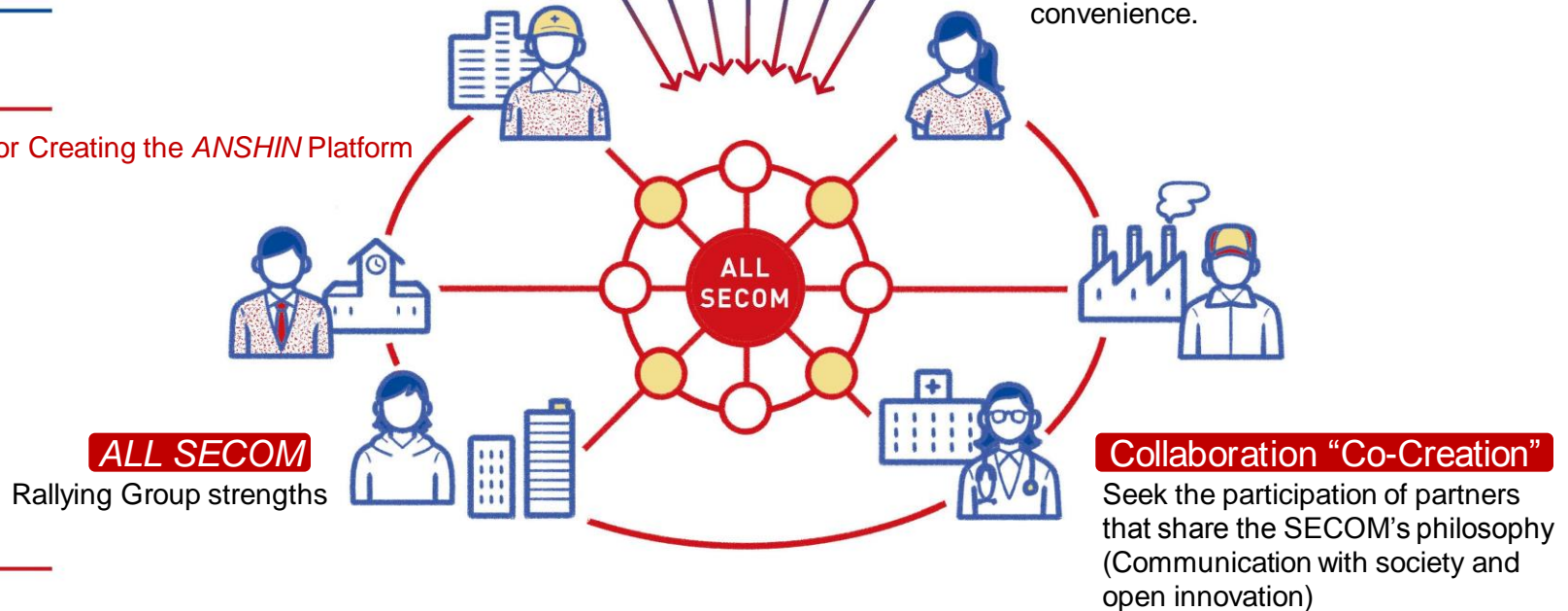
Connection

Respond to latent needs by using cutting-edge technologies and analyzing Big Data, thus strengthening relationship with customers.

Enhanced value

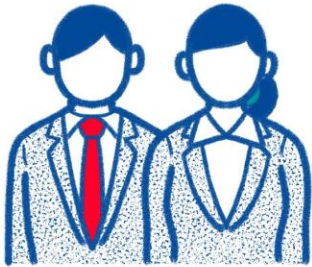
Respond to the needs of everyday concerns by adding greater value to services that provide peace of mind, thereby delivering comfort and convenience.

Strategies for Creating the ANSHIN Platform



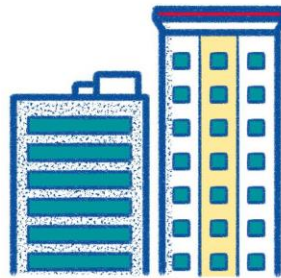
POWER OF US

Key Factors Driving the Implementation of Strategies



Human resources

- Encourage a managerial mindset in all employees that is rooted in job satisfaction.
- Promote diversification.
- Foster human resources capable of innovation and of functioning in a global business environment.



Organization

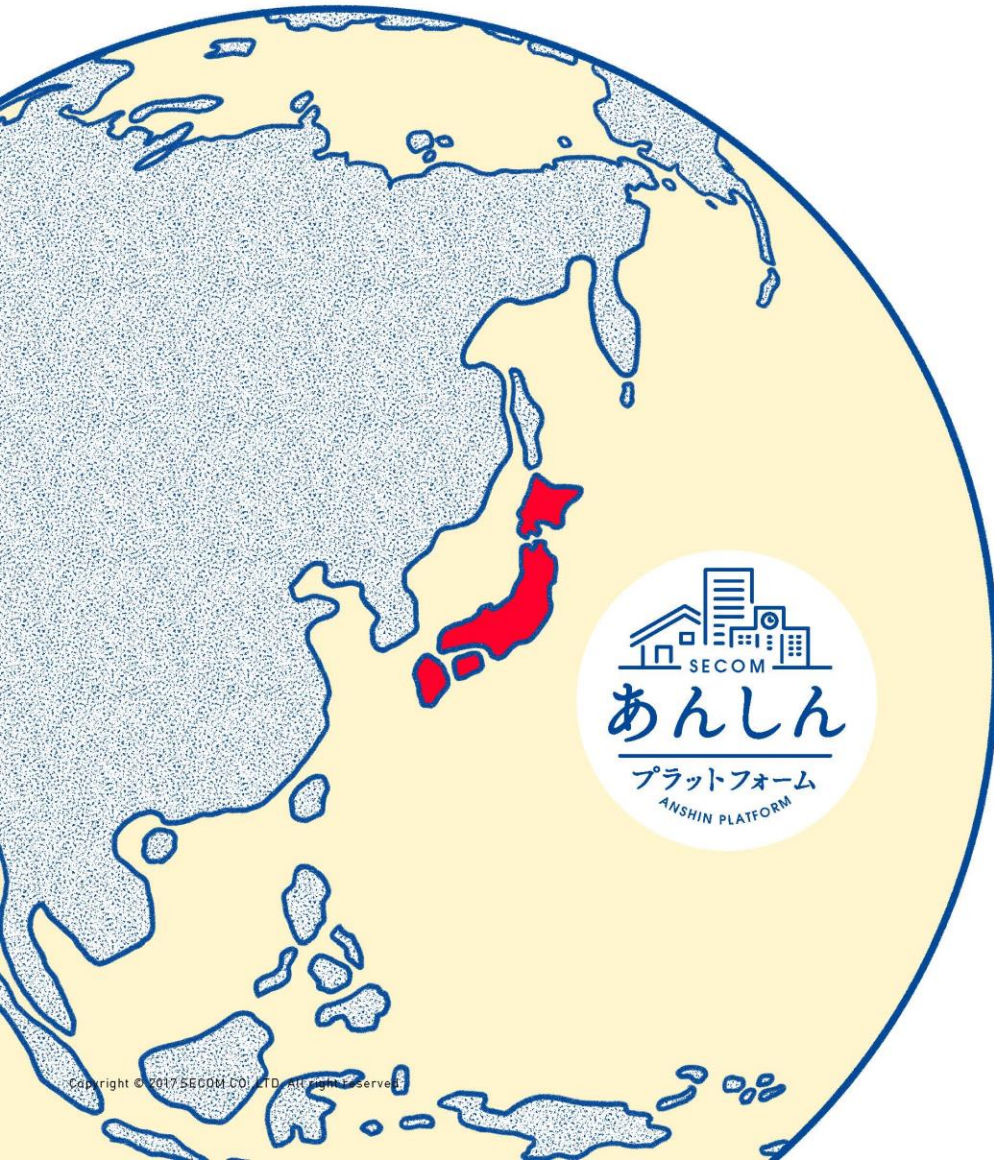
- Enhance solidarity by ensuring that SECOM's corporate philosophy is shared by all employees.
- Ensure an upbeat and unfettered corporate culture by promoting self-discipline.
- Increase productivity and service quality by utilizing state-of-the-art ICT.



Technologies

- Develop technologies that amplify human capabilities.
- Develop technologies that facilitate the provision of seamless services.
- Develop technologies that encourage peace of mind.

FOR GLOBAL | Global Expansion



In response to the increasing needs of customers overseas, SECOM will leverage its know-how cultivated in Japan, a front runner in addressing critical challenges with global relevance, to offer services in overseas markets that are customized to reflect local needs and sensibilities.

Promote *ANSHIN* as a global common word.

STEP 1

Promote further awareness of the *SECOM* brand in emerging countries in Asia and elsewhere

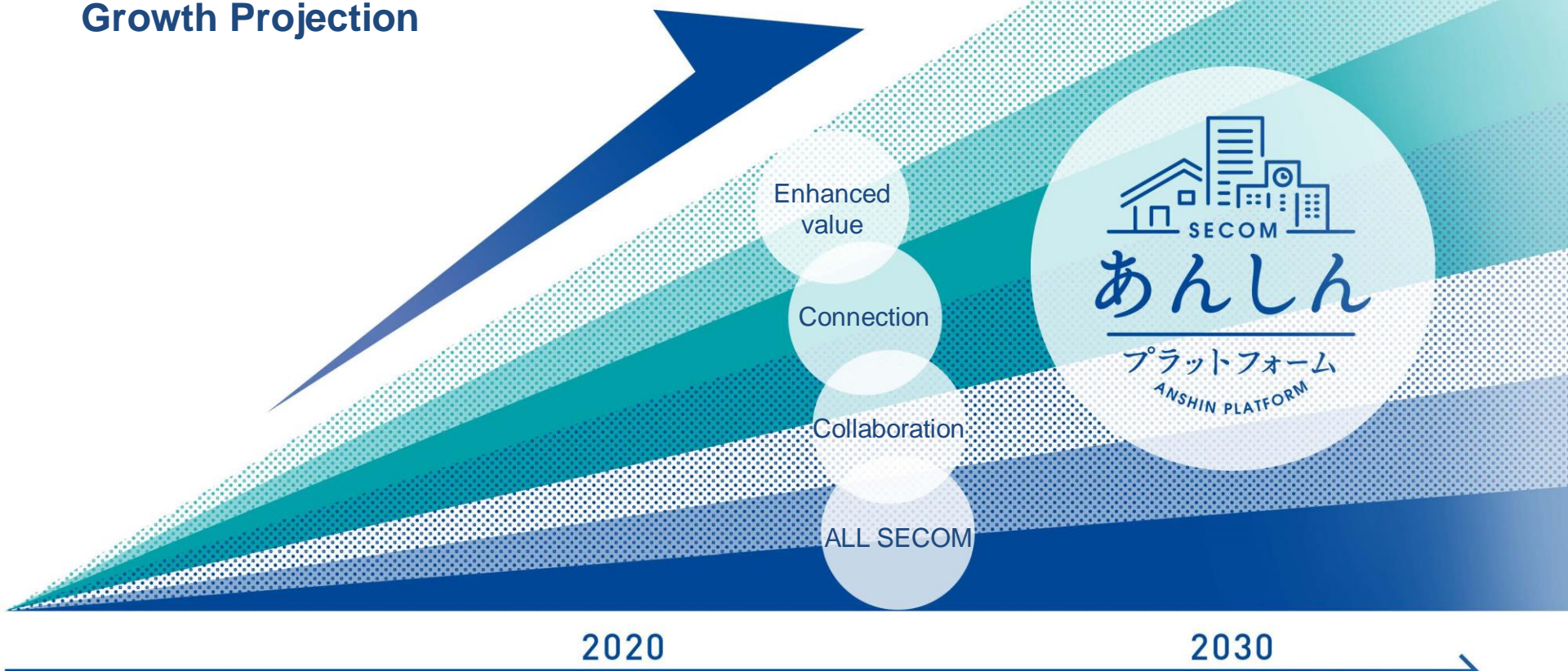
STEP 2

Deploy the *ANSHIN* Platform in overseas markets

GROWTH FORECAST

Growth Projection

Creating the ANSHIN Platform: Growth Projection



SECOM will continue to grow together with society.

In Closing

SECOM will continue striving to keep abreast of—or where possible to anticipate—social change, thereby ensuring its ability to provide enduring peace of mind. To this end, SECOM remains committed to evolving and improving.

SECOM will continue working to strengthen its relationship with society and to help address diverse social imperatives. In so doing, SECOM seeks to grow together with society.

SECOM will continue to evolve, in line with its goal of providing enduring peace of mind to an ever-changing society.

By creating its *ANSHIN* Platform, SECOM aims to provide enduring peace of mind to an ever-changing society.

The logo for SECOM, featuring the word "SECOM" in a bold, sans-serif font. The letters "S", "E", "O", and "M" are dark blue, while the letter "C" is a teal color.